

[Video Recording Link](#)

MODULE 10 L02

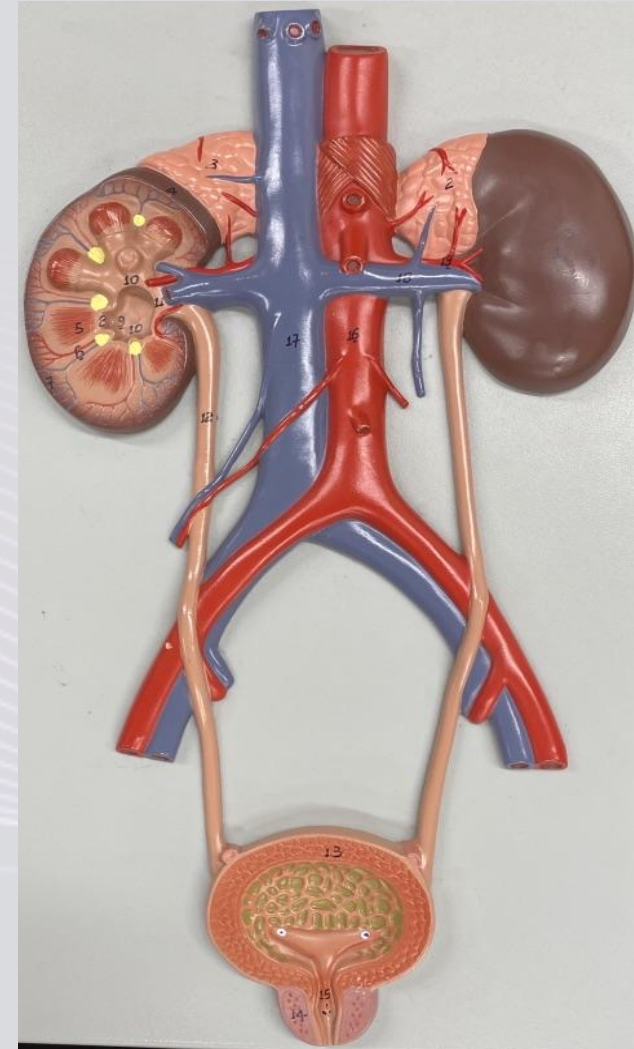
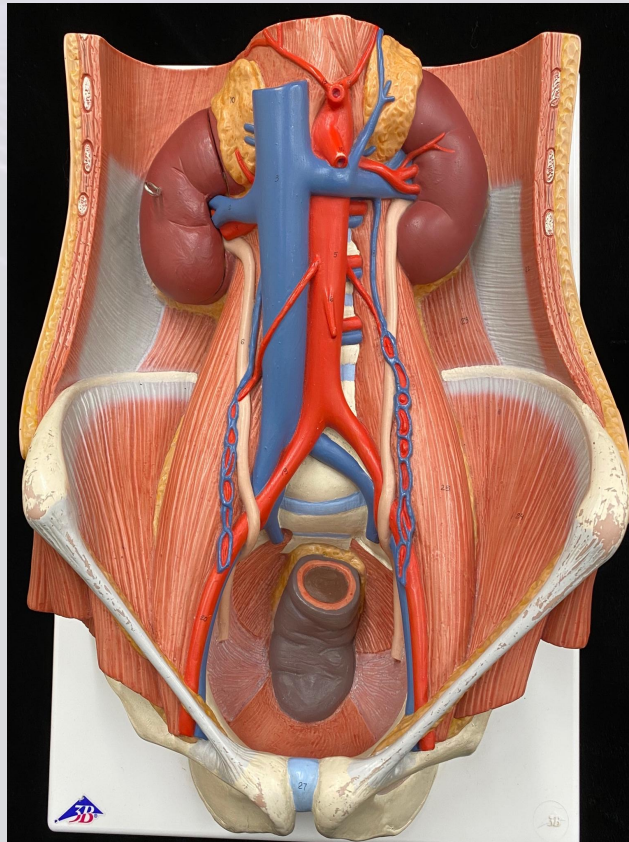
Urinary System: Tracts

Dr. Lisa Brinn
lbrinn@fiu.edu



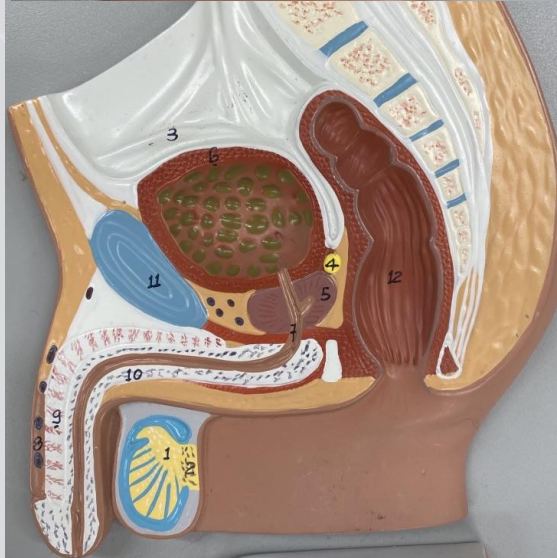
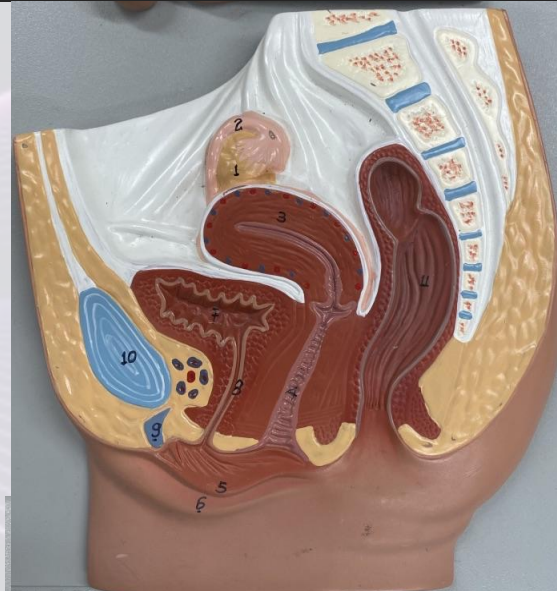
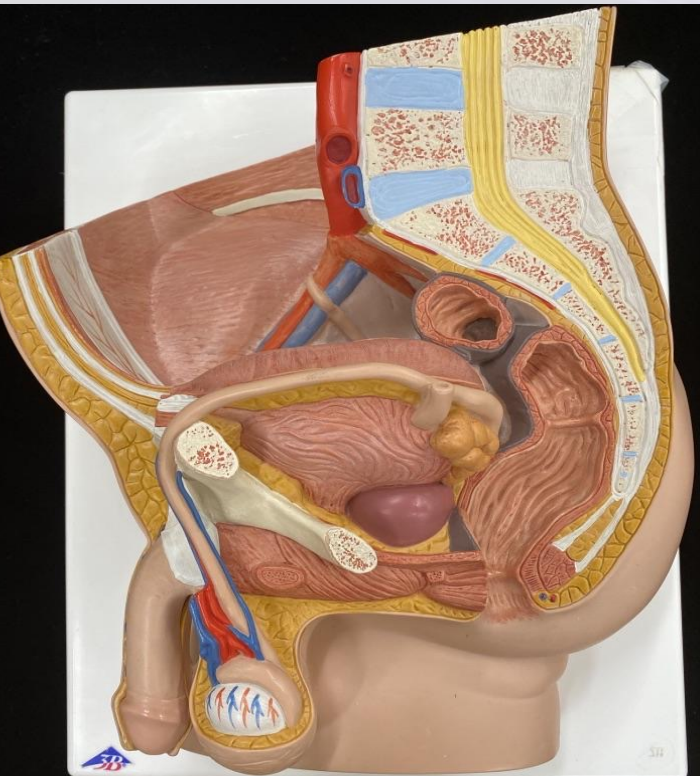
Urine Transport

- Done by ureters
 - ❖ From renal pelvis
 - ❖ To urinary bladder



Urine Storage

- Done by urinary bladder
 - ❖ From ureters
 - ❖ To urethra



Urine Elimination

- Done by urethra
 - ❖ From urinary bladder
 - ❖ To outside

